



## How long was Davenports at each trading address?

This information on Davenport's trading addresses is based on research by John Davenport, Anne Goulden and Fergus Roy. John and Anne published an initial list of addresses in the September/October 1981 of *The Magic Circular*. The list below was included in Fergus Roy's *The Davenport Story, Volume 3: The Life & Times of a Magical Family 1939 – 2010*, published by Lewis Davenport Limited, London, 2011.

Some of the dates given below approximate.

### **1898 – 1903**

Lewis traded from his home address during this period. One such address was 9 Pole Street, Stepney.

### **1903 – 1908 (August)**

30 Riles Road, Plaistow, London E

By July 1903 Lewis was living in and trading from this address, which was used on Davenports earliest catalogues.

### **1908 (August) -1912**

426 Mile End Road, London E

This was Lewis's first shop, where he also lived with his family. He advertised this address as the Palace Magical Stores. While he was at 426 Mile End Road, he had short leases on two shops at 138 and 144 High Holborn.

### **1910 (March) – 1910 (August)**

138 High Holborn, London WC

While he was at 138 High Holborn he advertised a factory and warehouse at 426 Mile End Road. By September 1910 he had given up the 138 High Holborn shop and his main business address was once again 426 Mile End Road.

### **1912 (August) – 1912 (December)**

144 High Holborn, London WC

The rent was paid until the end of December but Davenports may have moved to 1 Bloomsbury Court before then.

### **1912 (December) – 1913 (August)**

1 Bloomsbury Court, London WC

### **1913 (August) – 1915 (August)**

13 New Oxford Street, London WC

1 Bloomsbury Court was kept as a store for a time. In 1913 Davenports purchased 31 Woodford Road, Forest Gate for the family to live in, and vacated 426 Mile End Road.

**1915 (August) – 1937 (December)**

15 New Oxford Street, London WC

This was the first address where Davenports gave a telephone number in their advertisements.

Details are:

1915 – 1920 No telephone number

1921 – 1927 Museum 6907

1927 – 1937 Holborn 9012

This information can be useful for dating catalogues from this address. The lease on 15 New Oxford Street expired on 31 December 1937.

**1935 (August) – 1936 (April)**

71 Charing Cross Road, London W1

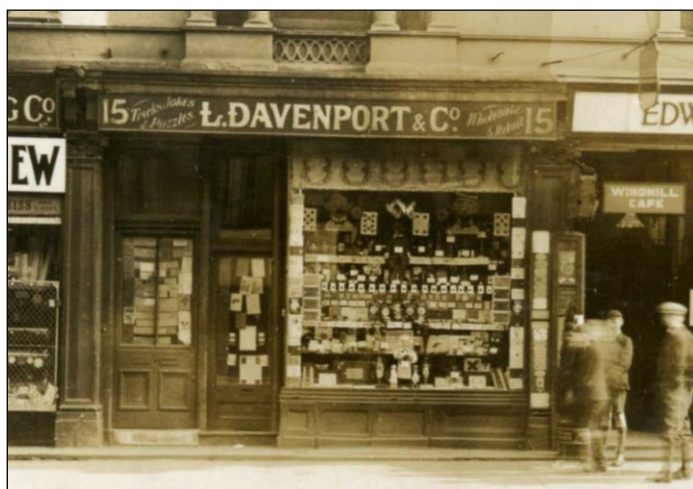
This was a second shop which Davenports referred to as the Maskelyne's Mysteries branch.

**1938 (January – December)**

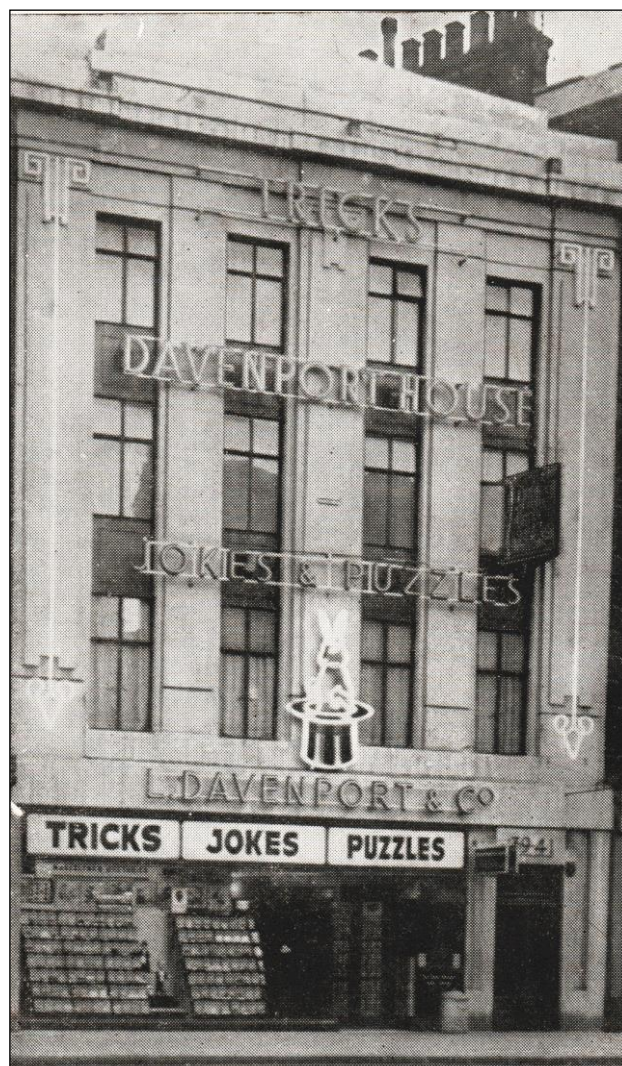
204 High Holborn, London WC1

**1938 (December) – 1942 (May)**

39/41 New Oxford Street, London WC1



*15 New Oxford Street*



*39/41 New Oxford Street*

**1942 (June) – 1962 (November)** except for a year when it was sublet

25 New Oxford Street, London WC1

*The Demon Telegraph* gives this as the business address from June 1942 to October 1945. At this point Davenports opened another shop at 111 High Holborn.

A signed agreement in the collection tells us that Davenports (address given as 111 High Holborn) sublet 25 New Oxford Street to Central London Bakeries of 8 Museum Street, WC1 for one year at a rental of £500 payable quarterly in advance. The agreement ran from 15 September 1947 to 14 September 1948, but the tenant seems to have moved out by 1 February 1948.

**1945 (January) –**

**Tam Shepherds in Glasgow**

33 Queen Street, Glasgow G1 3EF

In addition to the business addresses in London, in January 1945 Davenports purchased the Tam Shepherd magic, jokes and novelties shop in Glasgow. Nowadays Tam Shepherds is run by Roy and Jean Walton and their daughters.



**1945 (October) – 1948 (January)**

111 High Holborn, London WC1

This freehold shop was occupied at the same time as the 25 New Oxford Street premises. *The Demon Telegraph* announced that from 1 February 1948 the only business address was 25 New Oxford Street WC1.

**1962 (November) – 1984 (April)**

51 Great Russell Street, London WC1

**1984 (April) –**

7 Charing Cross Underground Shopping Arcade, London WC2N 4HZ

Davenports acquired the adjacent shops at numbers 5 and 6 in 1989, then relinquished number 5 in 2010.